



ARCHITECTURAL HARDWARE FITTINGS



PRODUCT CATALOGUE

**quba** GROUP™

[www.qubaindia.com](http://www.qubaindia.com)

# About quba GROUP

Our parent company is a well known name in the Indian architecture hardware industry. Established in 2010, it inherited a legacy in the hardware business combined with in-house manufacturing capabilities. The group is driven by good design and an emphasis on superior quality and distinctive aesthetics. It works with a varied range of individual retail customers, professionals and a variety of businesses. It strongly believes in a harmonious blend of technology and beauty - without compromises in either aspect - in order to be the best in the industry.

## The Quba Group Brands:



Architectural  
Hardware Fittings

Crafted with utmost passion and an eye for aesthetics, Quba brings to you a wide range of elegant, innovative and reliable security solutions.



Kitchen and Furniture  
Hardware Fittings

Unlock space in every corner with Symmetry. Smart and innovative kitchen and furniture fittings to make maximum out of your space and organise better.



Glass  
Hardware Fittings

Arteza's sophisticated and ultra-practical design language blended with superior engineering and good looks makes it a perfect fit to your home decor. Arteza collection ranges from designer architectural glass fittings to smart door control systems.



Inspiring  
bath Concepts

Beauty is made of details. Be it the contours, form or finish, Agua makes everyday bathing experience exquisite with the collection personifying elegance and minimalism design.



Quba is luxury hardware brand by the QUBA Group that embodies passion, individuality and authenticity. With a and inspires while staying sustainable in function and form.

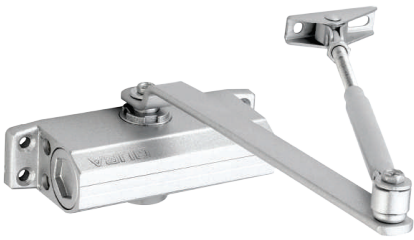
Since it's inception in 2010, the brand has brought together and reined designs, exquisite craftsmanship and cutting edge technology to create pieces of art disguised as hardware. A true relection of bold and progressive ideals, QUBA is synonymous with modern luxury. The brand caters to people with a reined palate.

Experience excellence with QUBA's masterfully crafted collections that add a touch of grace with a whi of elegance to contemporary living spaces.

## OVERHEAD DOOR CLOSER - 40 KGS

MATERIAL ALUMINIUM ALLOY

FINISH SILVER



### FEATURES

- Fully hydraulically controlled 2 closing speed adjustment
- Max. door weight upto 40kg & door width 850mm
- Suitable for Right hand & Left Hand Door
- Closing force 1/2 according to EN 1154



## OVERHEAD DOOR CLOSER - 60 KGS

MATERIAL ALUMINIUM ALLOY

FINISH SILVER



### FEATURES

- Fully hydraulically controlled 2 closing speed adjustment
- Max. door weight upto 60kg & door width 950mm
- Suitable for Right hand & Left Hand Door
- Closing force 2/3 according to EN 1154



## OVERHEAD DOOR CLOSER - 80 KGS

MATERIAL ALUMINIUM ALLOY

FINISH SILVER



### FEATURES

- Fully hydraulically controlled 2 closing speed adjustment
- Max. door weight upto 80kg & door width 1100mm
- Suitable for Right hand & Left Hand Door
- Closing force 3/4 according to EN 1154



## CONCEALED DOOR CLOSER - 80 KGS

MATERIAL ALUMINIUM ALLOY

FINISH SILVER



## FEATURES

- Any degree Hold Open function
- Fully hydraulically controlled 2 closing speed adjustment
- Max. door weight upto 80kg & door width 1100mm
- Suitable for Right hand & Left Hand Door
- Closing force 3/4 according to EN 1154



## Model QDC 80 Ext (WP)

## OVERHEAD DOOR CLOSER WITH PELMET ARM

MATERIAL ALUMINIUM ALLOY

FINISH SILVER | AB



## FEATURES

- Any degree Hold Open function
- Fully hydraulically controlled 2 closing speed adjustment
- Max. door weight upto 80kg & door width 1100mm
- Suitable for Right hand & Left Hand Door
- Closing force 3/4 according to EN 1154



## Model QDC 80 Ext (WP)

## OVERHEAD DOOR CLOSER WITH PELMET ARM WITH COVER

MATERIAL ALUMINIUM ALLOY

FINISH RGPVD | GPVD | BLACK PVD



## FEATURES

- Any degree Hold Open function
- Fully hydraulically controlled 2 closing speed adjustment
- Max. door weight upto 80kg & door width 1100mm
- Suitable for Right hand & Left Hand Door
- Closing force 3/4 according to EN 1154



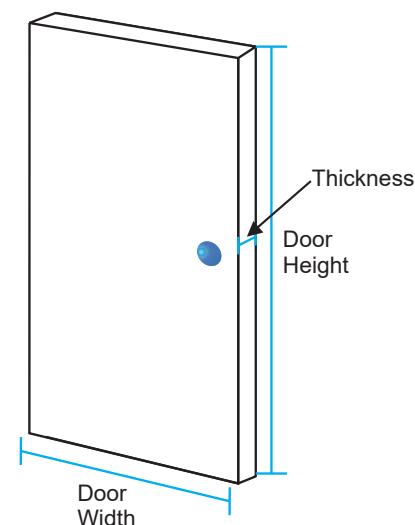
## DOOR WEIGHT CALCULATION

$$\text{Height (m)} \times \text{Width (m)} \times \text{Thickness (mm)} \times D \text{ (g/cc)}$$

D = Density

Wood, D = 0.75 g/cc

Glass, D = 2.5 g/cc



## DOOR CLOSERS (SIZING):

Door closers are sized from 1 to 7 with the higher numbers used for more powerful units.

Manufacturers have selection guides based on the width and weight of the door but there are adjustable units if an accurate door sizing is unavailable.

The following chart shows the test door mass / size for the seven identified grades under the BS EN 1154 classification (a recognized standard for classifying door closers).

Closer Size	Door Width	Max. Door Weight
EN 1	750 mm	20 kg
EN 2	850 mm	40 kg
EN 3	950 mm	60 kg
EN 4	1100 mm	80 kg
EN 5	1250 mm	100 kg
EN 6	1400 mm	120 kg
EN 7	1600 mm	160 kg

### CAUTION:

Always round up to the next door width (i.e., for 870 mm door use 950 mm).

If more severe conditions are expected then use the next door width (i.e., for 830 mm door use 950 mm).

When specifying pelmet arm functions, allowance should be made for approx. 30% loss respectively.

ABBREVIATION	FULL FORM
SS	Satin Steel
SSM	Satin Steel Matt
SS/CP	Satin Steel/Chrome Plates
AB	Antique Brass
ABM	Antique Brass Matt
RG	Rose Gold
RGPVD	Rose Gold Physical Vapor Deposition
RGMPVD	Rose Gold Matt Physical Vapor Deposition
BMPVD	Black Matt Physical Vapor Deposition
GPVD	Gold Physical Vapor Deposition
GP	Gold Plated
BM	Black Matt
JBM	Jet Black Matt
MB	Milango Beige
TB	Terra Bronze
W	Wooden
WH	White
CK	Common Key
MK	Master Key



## Architectural Hardware Fittings

Crafted with utmost passion and an eye for aesthetics, Quba brings to you a wide range of elegant, innovative and reliable security solutions.



## Kitchen and Furniture Hardware Fittings

Unlock space in every corner with Symmetry. Smart and innovative kitchen and furniture fittings to make maximum out of your space and organise better.



## Glass Hardware Fittings

Arteza's sophisticated and ultra-practical design language blended with superior engineering and good looks makes it a perfect fit to your home decor. Arteza collection ranges from designer architectural glass fittings to smart door control systems.



## Inspiring bath Concepts

Beauty is made of details. Be it the contours, form or finish, Agua makes everyday bathing experience exquisite with the collection personifying elegance and minimalism design.